

Apex/Pavilion Shed Extension Instructions

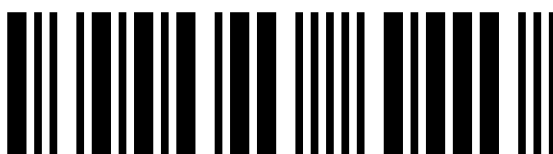
Please read this **before** starting :

Partition panels look the same as other panels but have **no overhanging cladding at the bottom.**

8ft Wide:



6ft Wide:



AS343



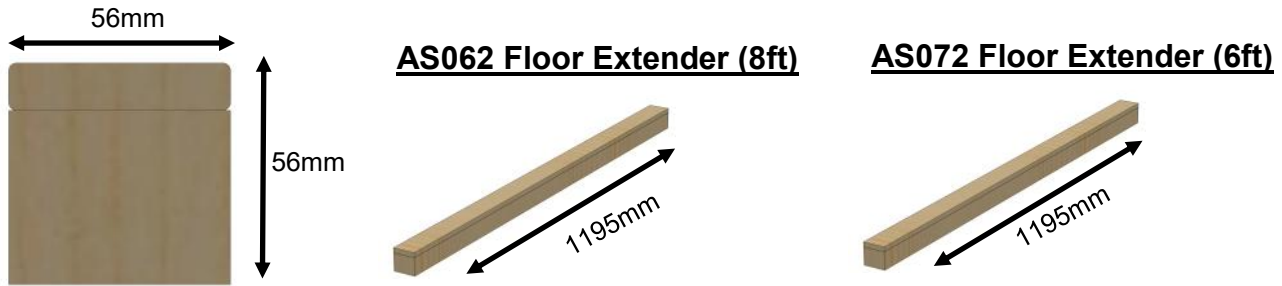
18/12/2025

Please read all instructions before proceeding... Made in the United Kingdom

SHEDFAST

Shed Extension (Optional)

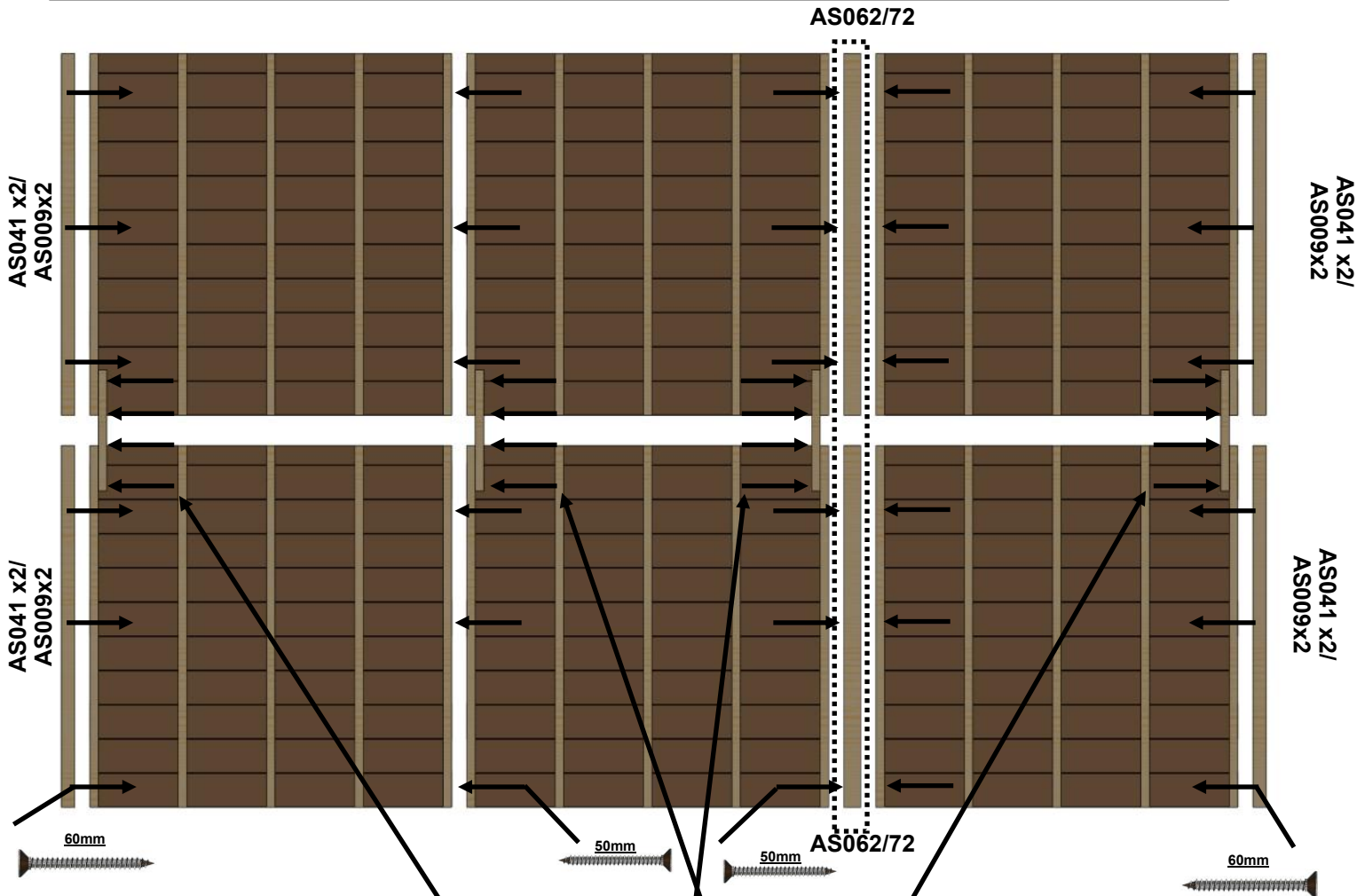
If you have a partition with a shed extension on your shed, you need to consider how your floor is built. You will get **2 x AS062 Floor Extenders with the 8ft model** or **1 x AS072 Floor Extender with the 6ft model** to extend the floor enough to fit the partition onto the base. See below for how it is to be fitted.



Using **02-5001 Self drilling 60mm screws**, attach the **AS041x2** or **AS009x2** to the ends as show on the diagram (below).

Screws every 2ft will be sufficient to keep the floor firmly held together

Decide which side you want your partition on and that is where to put the **AS062** or **AS072 Floor extender**. This can be attached to the floor with **3 x 50mm screws**. Make sure it is flush at the ends and at the top.



Where two panels join use the **AS027 400mm** joining pieces of wood to join. Also screw panels together where two floor bearers butt up to each other. Use **50mm screws** for all these.

If the floor is longer than 12ft, you may want to make the floor in two halves to make turning it over easier

Shed Door Panel Assembly

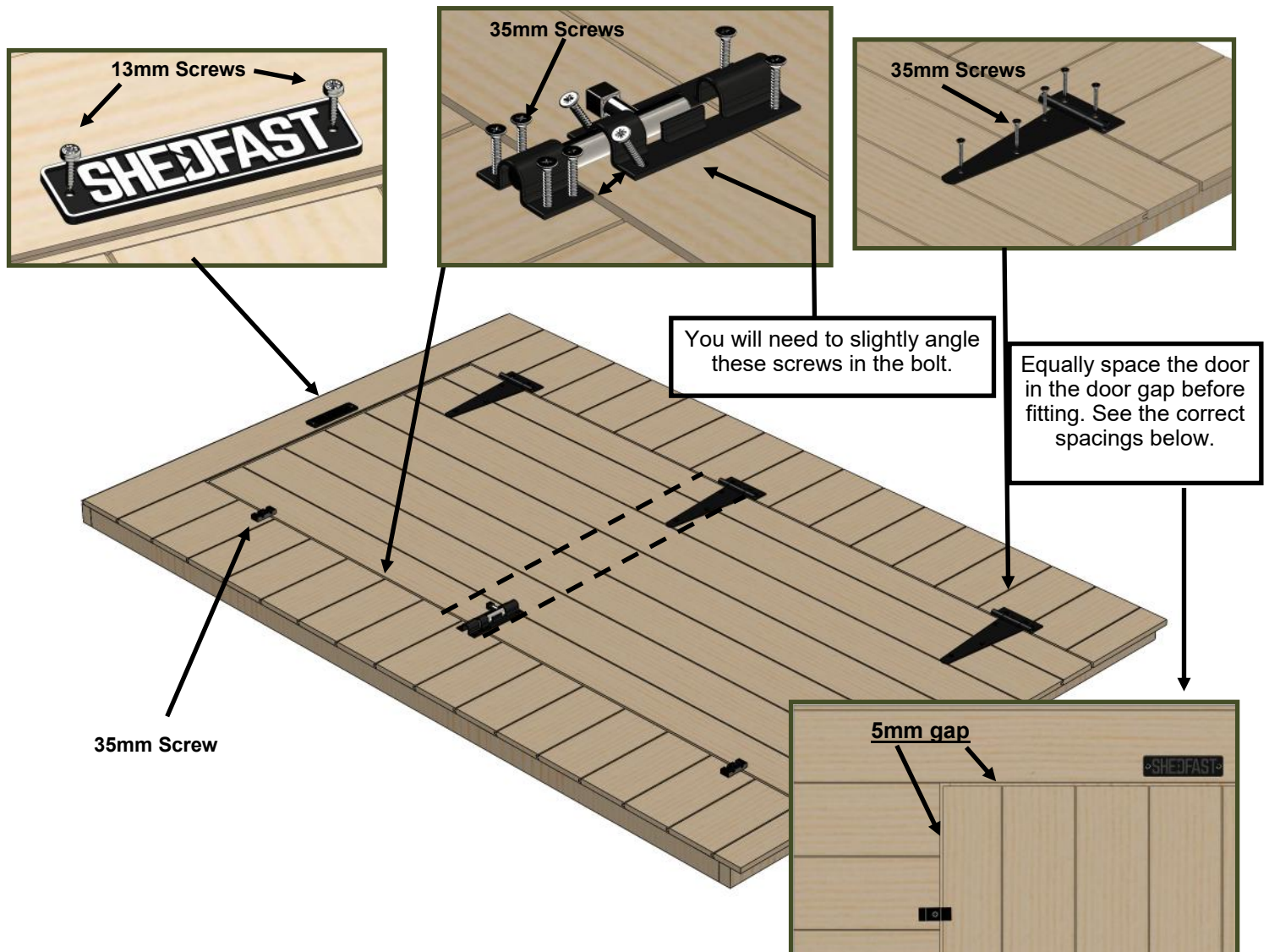
The door is ambidextrous, so simply turn it upside down to change the hinge side.
 Fit the door in the door panel by lying down, evening up the space and screwing hinges on using **35mm screws 02-1814**

Add toggle buttons and pad bolt using **35mm screws 02-1814**

Add the name plate using **13mm screws**

When screwing the lock on, make sure you line it up with the brace on the inside of the door (see dotted line below)

NOTE: The door can not go in the partition unless you are prepared to modify and cut a strip off the bottom



<u>Part Code</u>	<u>Quantity</u>
ASA1005 Single Door Panel 1200x1856	1
ASA1008 Single Door 740x1751	1
AS302 Hinges (already on the door)	3
AS303 Pad Bolt	1
AS304 Turn Button	2
AS306 'SHEDFAST' Name Plate	1

Shed Extension (Optional)

You now need to get your partition walls and put them to one side. These will look very similar to the standard **ASA1004/6**, but they will have the bottom lip already removed. See below

It is important you separate these and only use the panels with the lip removed as the partition walls.

AS1006 (with the lip)

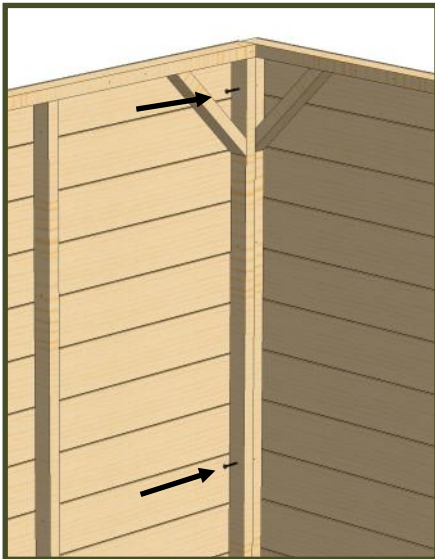


AS1105 (with no lip)

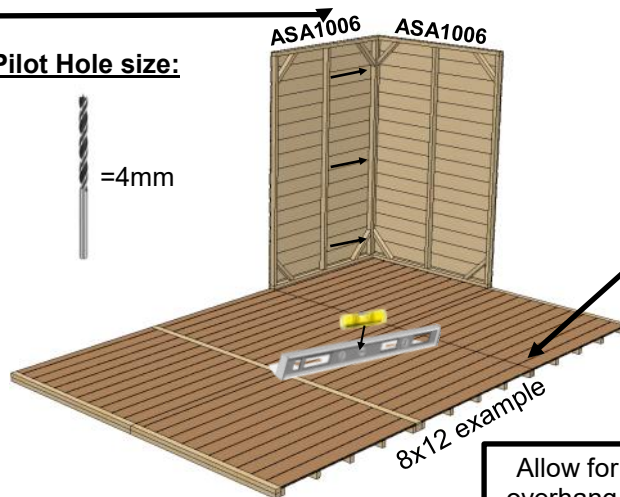


When attaching the sides together, use three **50mm wood screws** per vertical and ensure you make pilot holes with a 4mm drill bit.

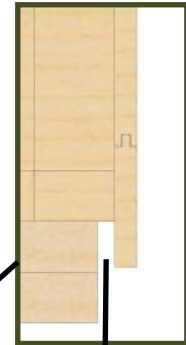
NOTE: Because the plain, door and window panels are all the same size, you can position them wherever you want. There is no set order for them to be in, its totally your preference.



Pilot Hole size:



8x12 example

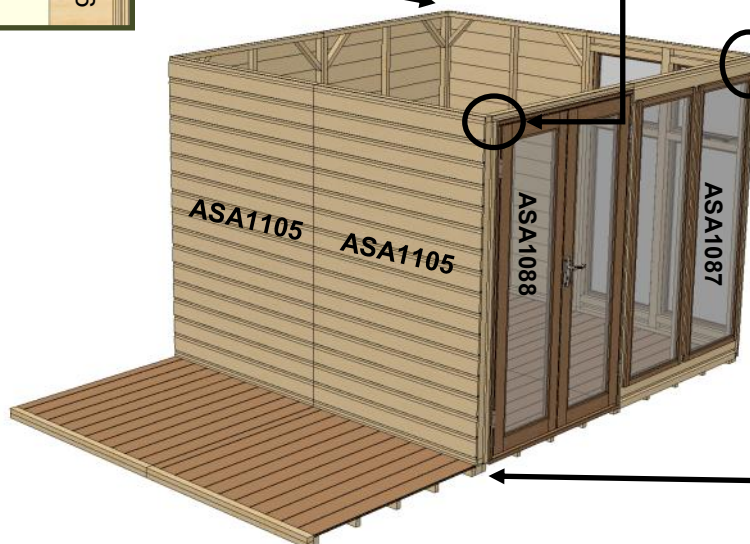


Allow for an approx. 5mm overhang between the floor and the side panel.

See how when the panels are lined up correctly, the cladding sits proud.



Partitions fit in a similar way as the gable end

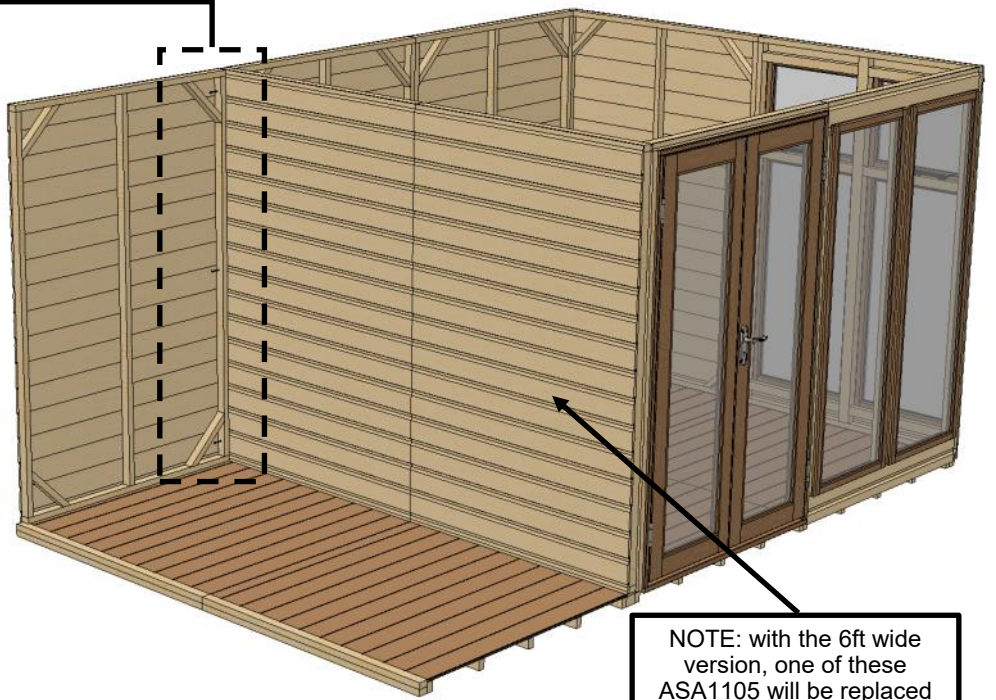


**ASA062 or AS072
Floor Extender**

Shed Extension (Optional)



8x12 example

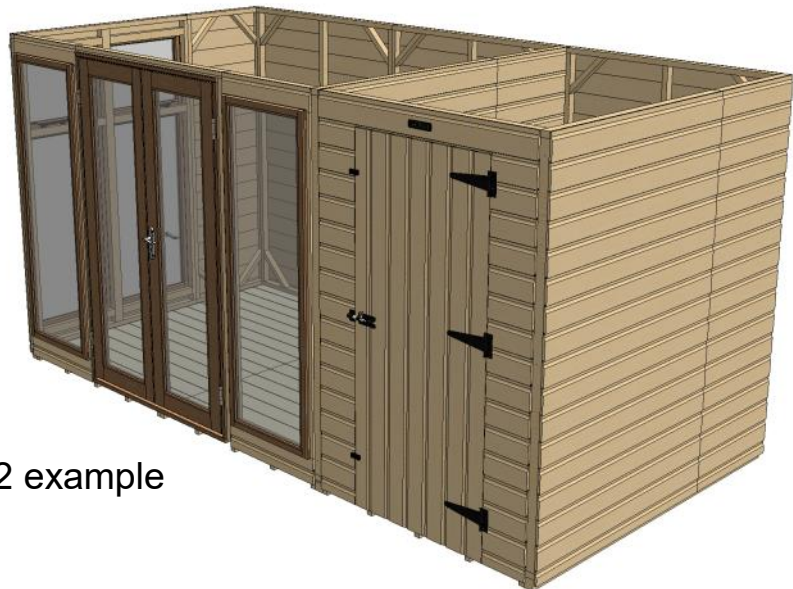


NOTE: with the 6ft wide version, one of these ASA1105 will be replaced with a ASA1106

Begin to add the extra walls of the shed extension by attaching them to the **ASA1105/1106** partition walls. Do this like you have previously done with **3 x 50mm screws** ensuring it is level and flush at the top.



8x12 example

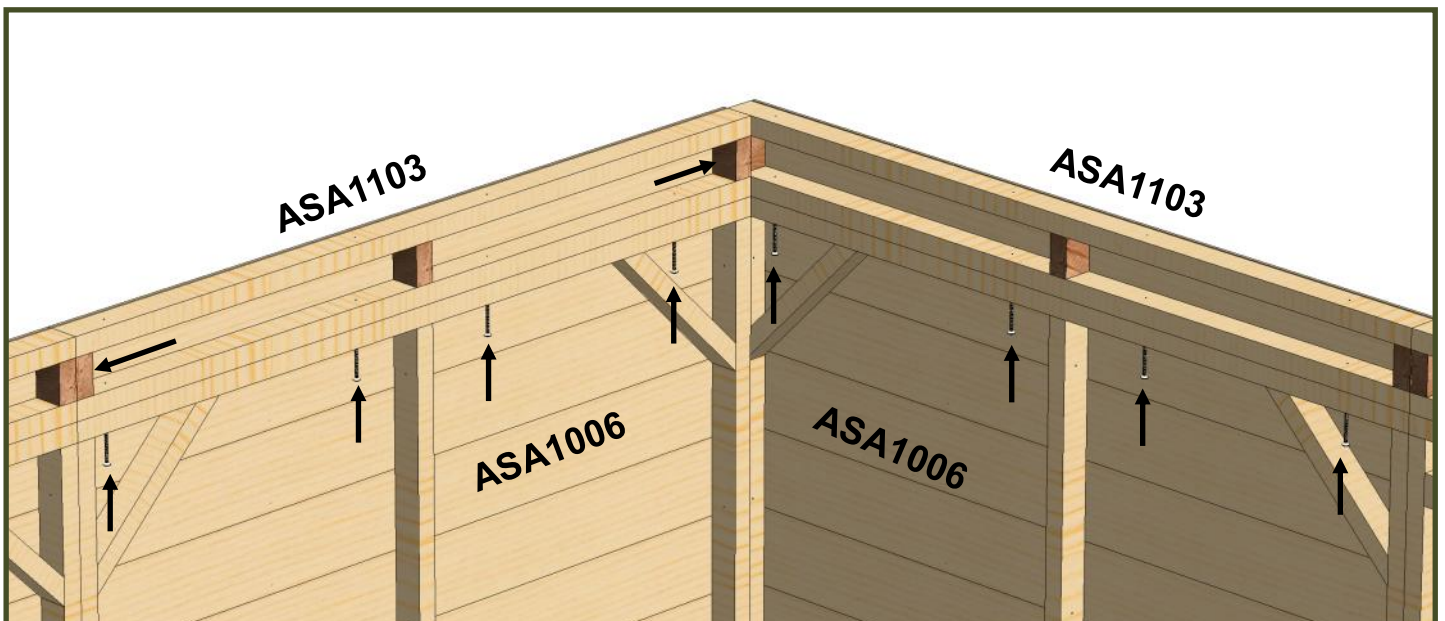
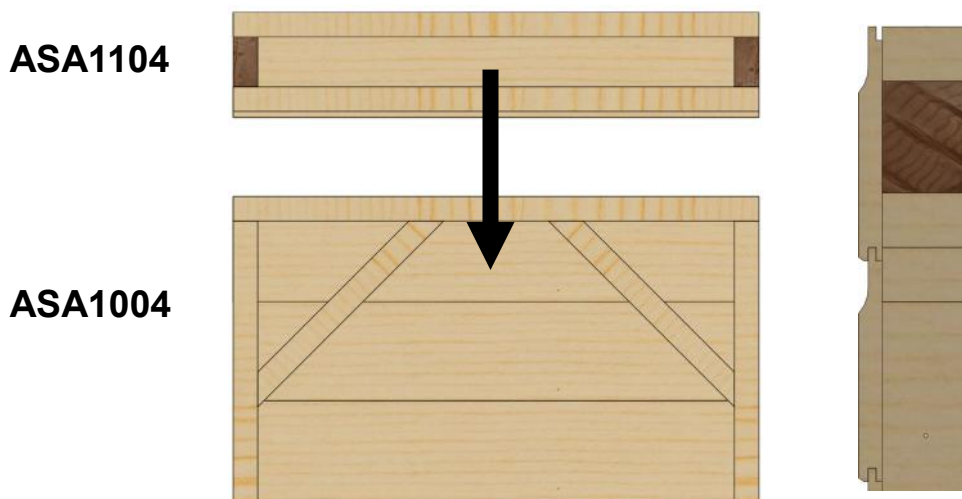
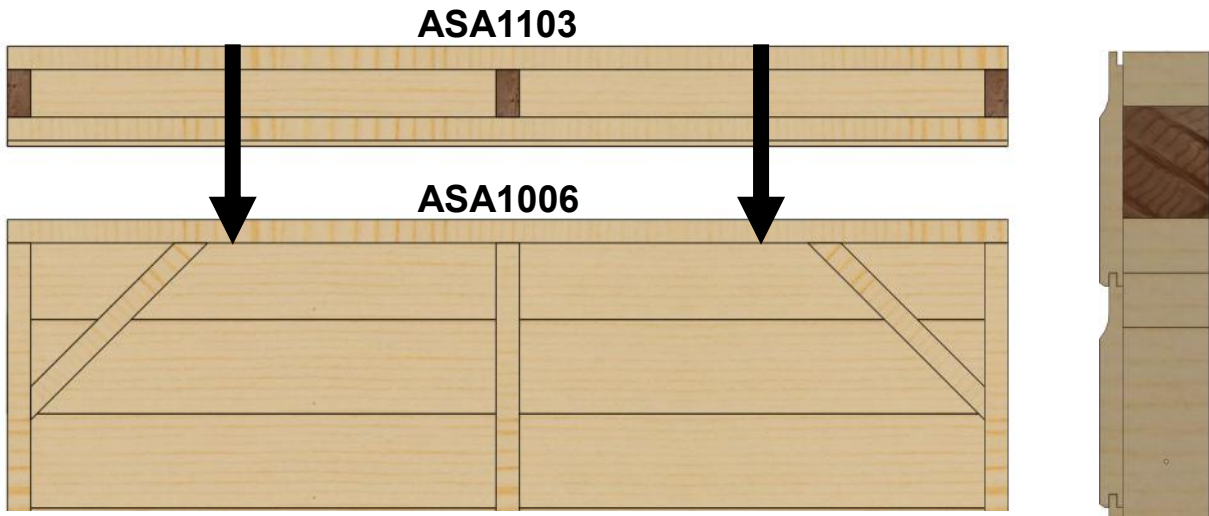


6x12 example

Installing the spacers

Once you have your sides on place on your floor, you can now go around the building and install the **ASA1103** and **ASA1104 Spacer Panels** to go above your side panels with **50mm screws**.

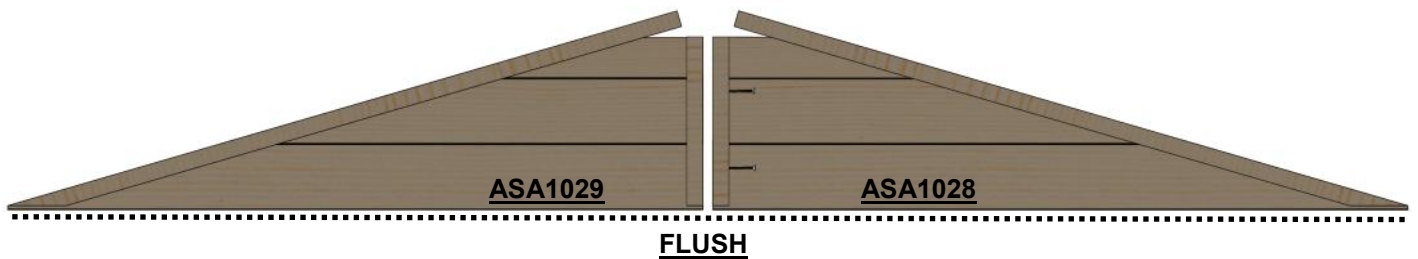
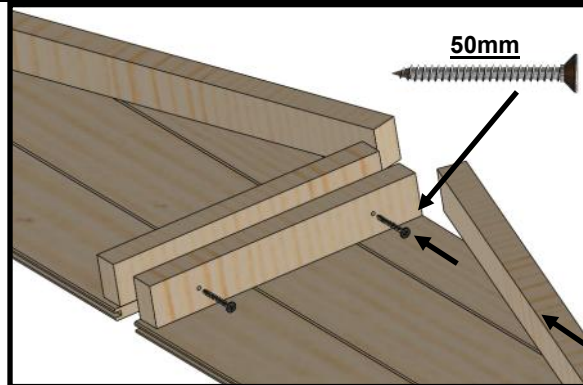
These extend the height of the side panels and allow the doors to pass the overhang at the eaves.



Assembling and installing the apex pieces for 8ft Wide

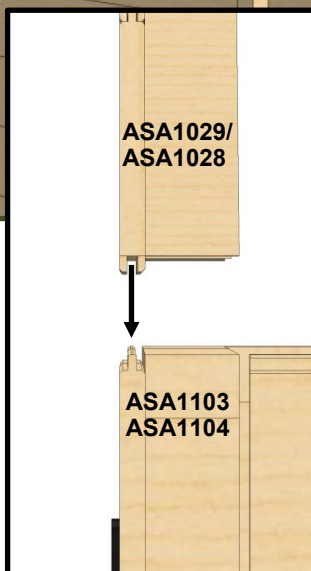
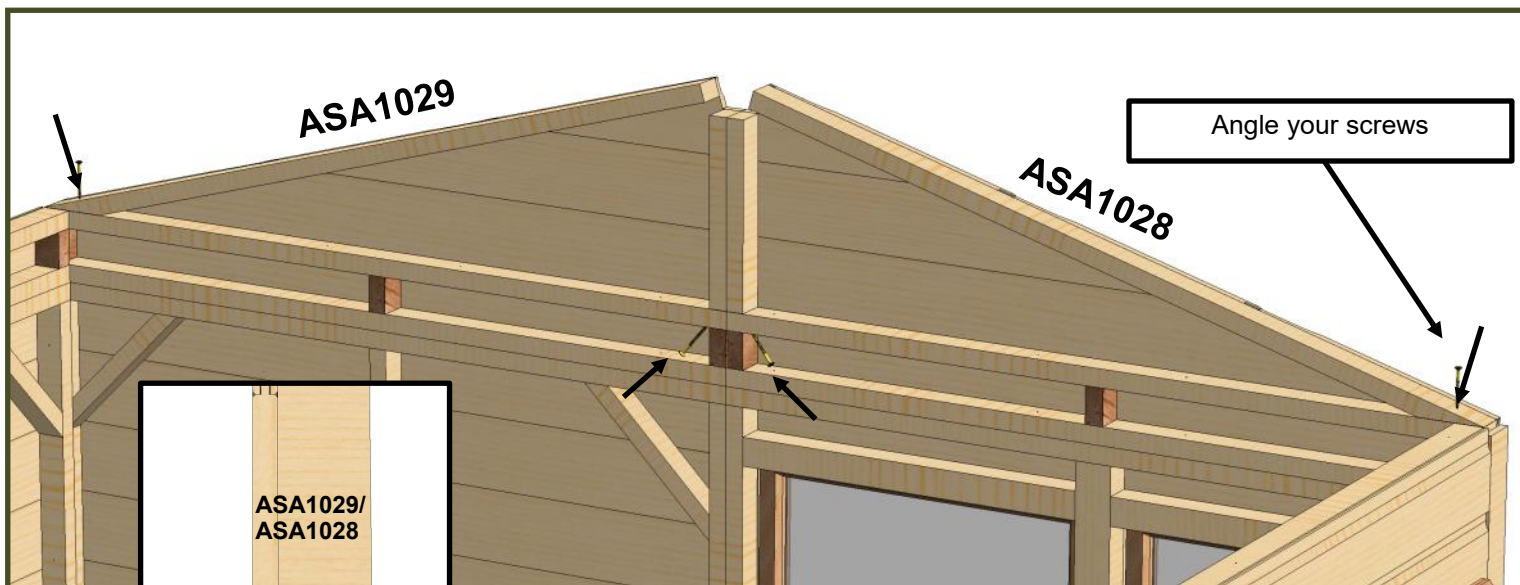
You now need to assemble the apex pieces as they come in two parts, **ASA1029 8ft Apex Right** and **ASA1028 8ft Apex Left**.

Lay them out on the floor and **pilot drill 2 x 4mm holes** into the baton as seen below. Once you have made these pilot holes you can screw these together using **2 x 50mm screws**. Ensure the bottom of the apex panels are flush with each other before you attach them together so that when you put them onto the shed they sit correctly.



The apex panels **ASA1029 / ASA1028** can now be placed on top of the side panels at the gables.

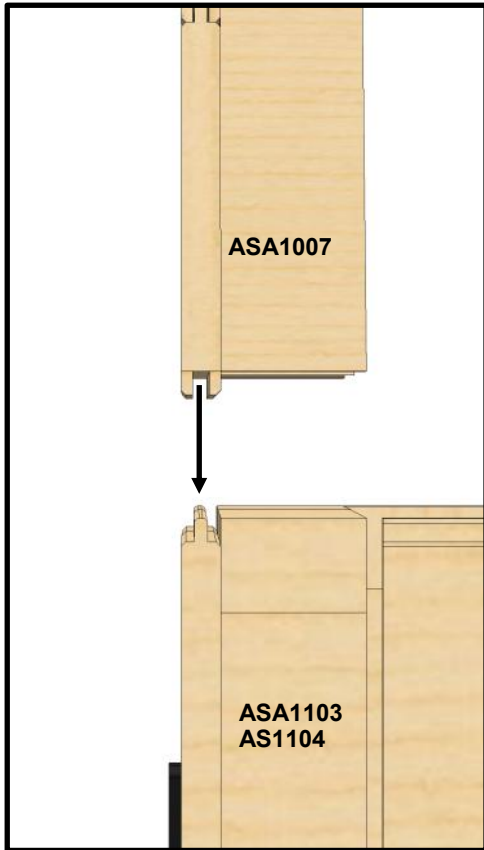
Use **60mm screws** to screw the roof down and attach to the sides. See the arrows below for where to screw



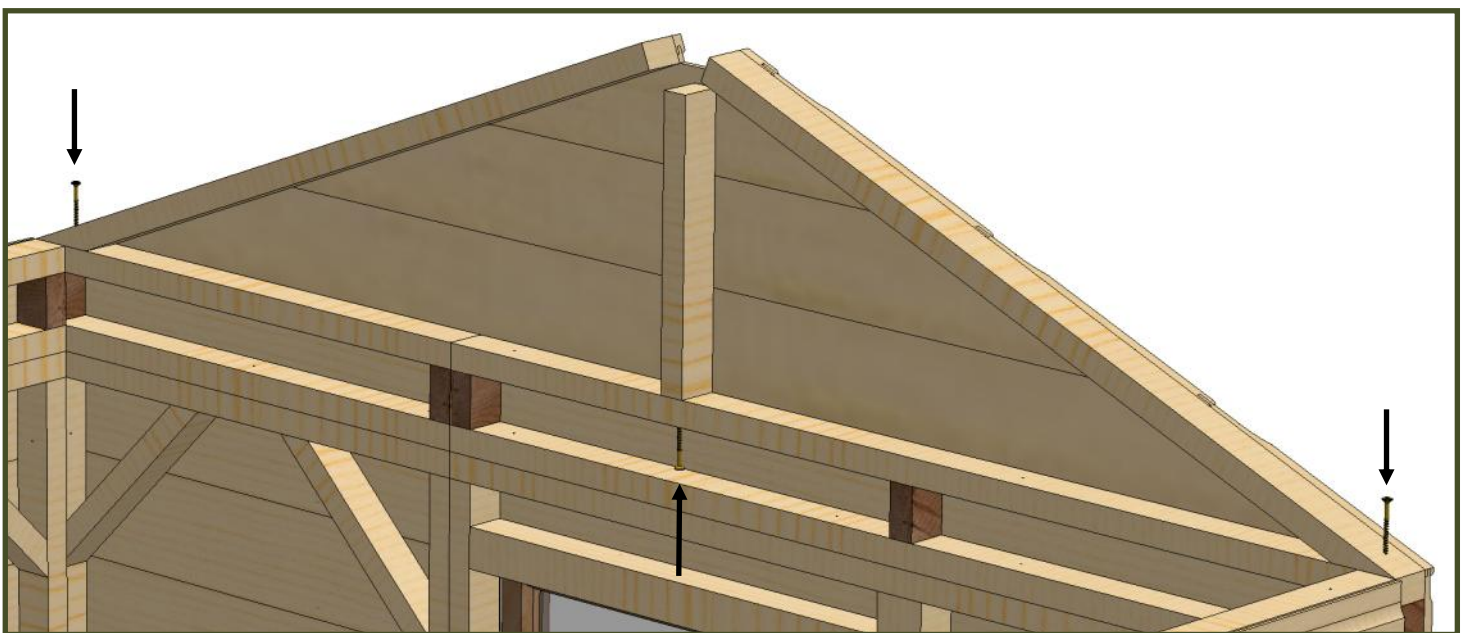
The cladding overhangs the Apex **ASA1028/29**, this means that when the **ASA1028/29** sits on top of the **ASA1103/ ASA1104** the tongue can sit nicely in the groove.

Installing the apex panels for the 6ft Wide

The **ASA1007** panels can now be placed on top of the **ASA1017/ASA1036** that you previously attached to the gable ends. You can use **3 x 60mm screws** for this part. See the image at the bottom of the page for where to screw.

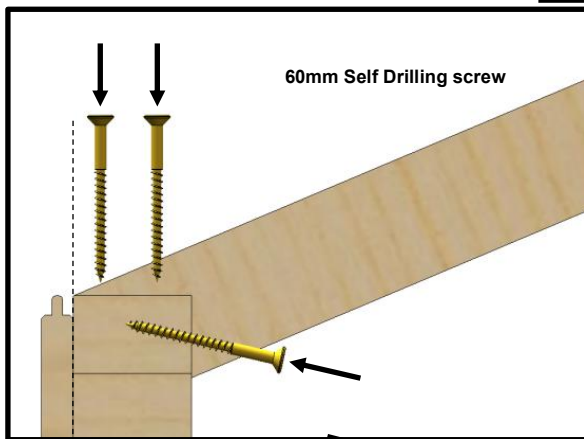
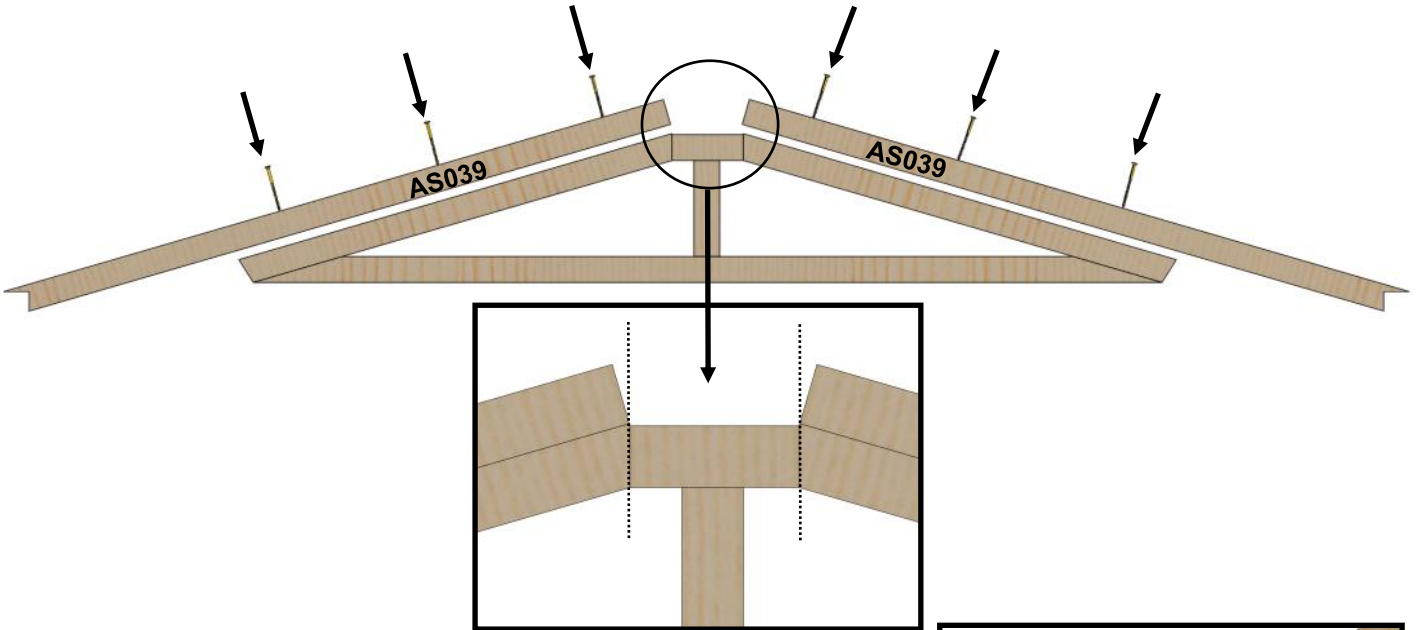


The cladding overhangs the Apex **ASA1007**, this means that when the **ASA1007** sits on top of the **ASA1103/ASA1104** the tongue can sit nicely in the groove.



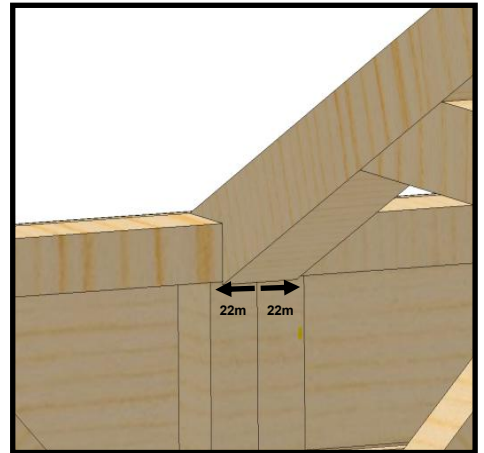
Truss Assembly for 8ft Wide

Its now time to assemble the truss. It will arrive in sections that you need to put together with 80mm screws. You need to attach the separate AS039 batons to the pre assembled truss frame. See below for where to screw. Make sure that the AS039 baton is nice and flush with the corner at the top



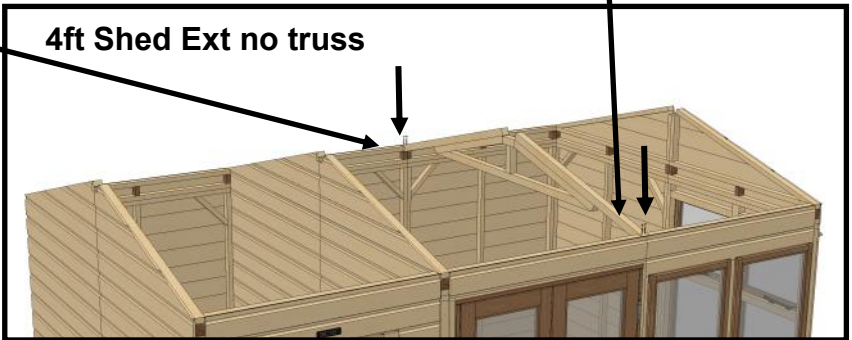
60mm Self Drilling screw

Its very important to get the trusses spaced 22mm either side of the panel joins. This is because of the central baton of the roof panel. If the truss is in the correct place the roof panel will drop and fit nicely around the truss. Use 60mm self drilling screws to screw the trusses down.



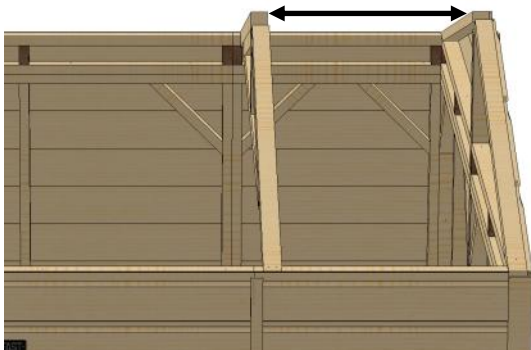
IMPORTANT

NOTE: No truss is needed on the 4ft shed. If you have the 8ft wide model you will need to consider where your truss is going if your shed extension is 6ft or 6ft wide, see below:



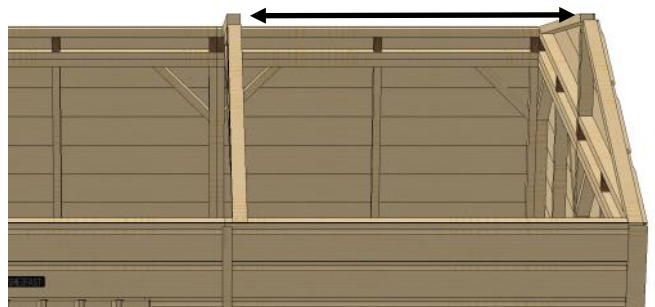
6ft Shed Ext

534mm



8ft Shed Ext

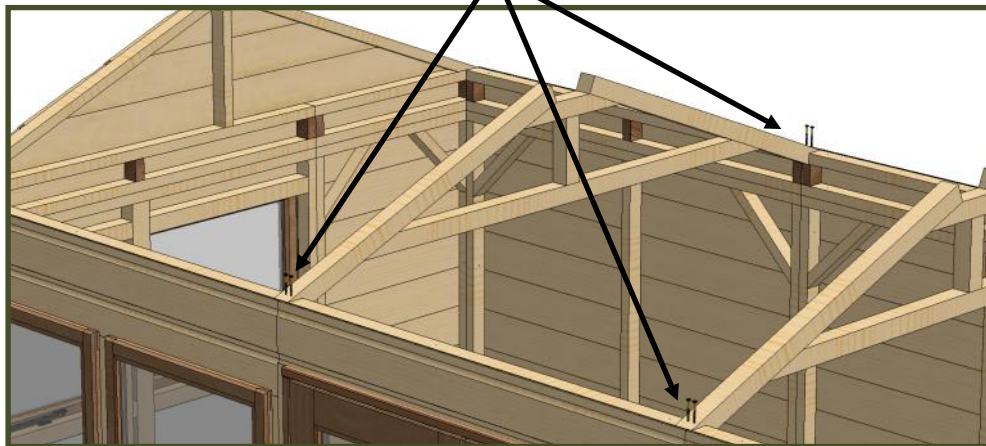
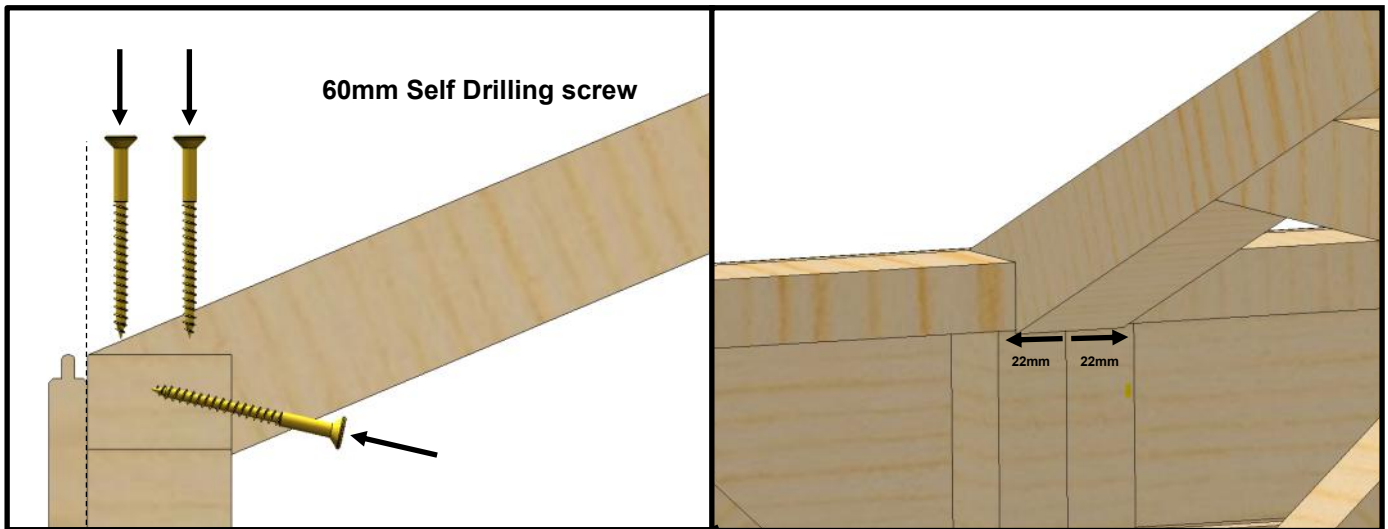
1134mm



Installing the trusses for 6ft Wide

Its now time to install your **ASA1010 Truss**, these can be placed equally (22mm each side of the join) over the joins of the panels and secured down with **3 x 60mm screws on each side**. See the image below for where is best to put your screws.

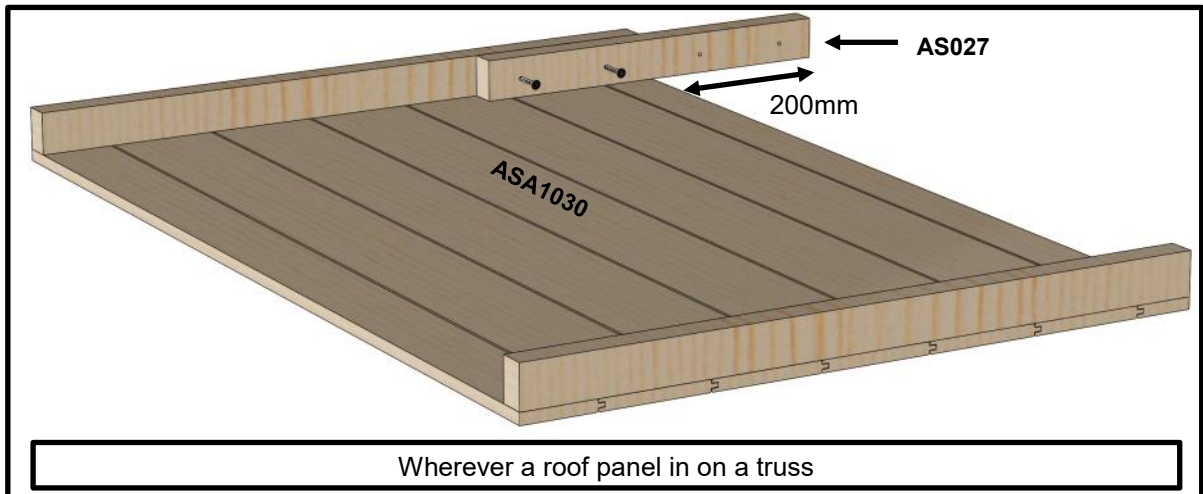
Keep in mind that on the 6x4 model or models with the doors centralised, the truss is placed in the middle of the side panel.



NOTE: no truss is needed on the 4ft shed section

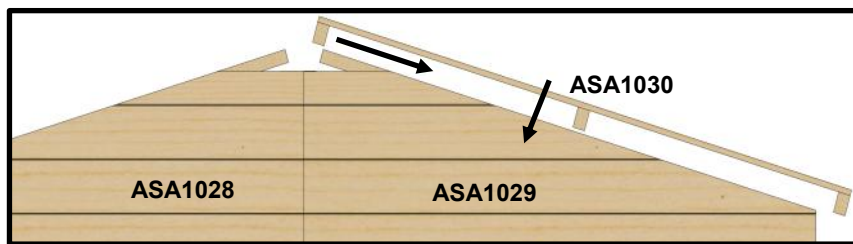


Roof Assembly

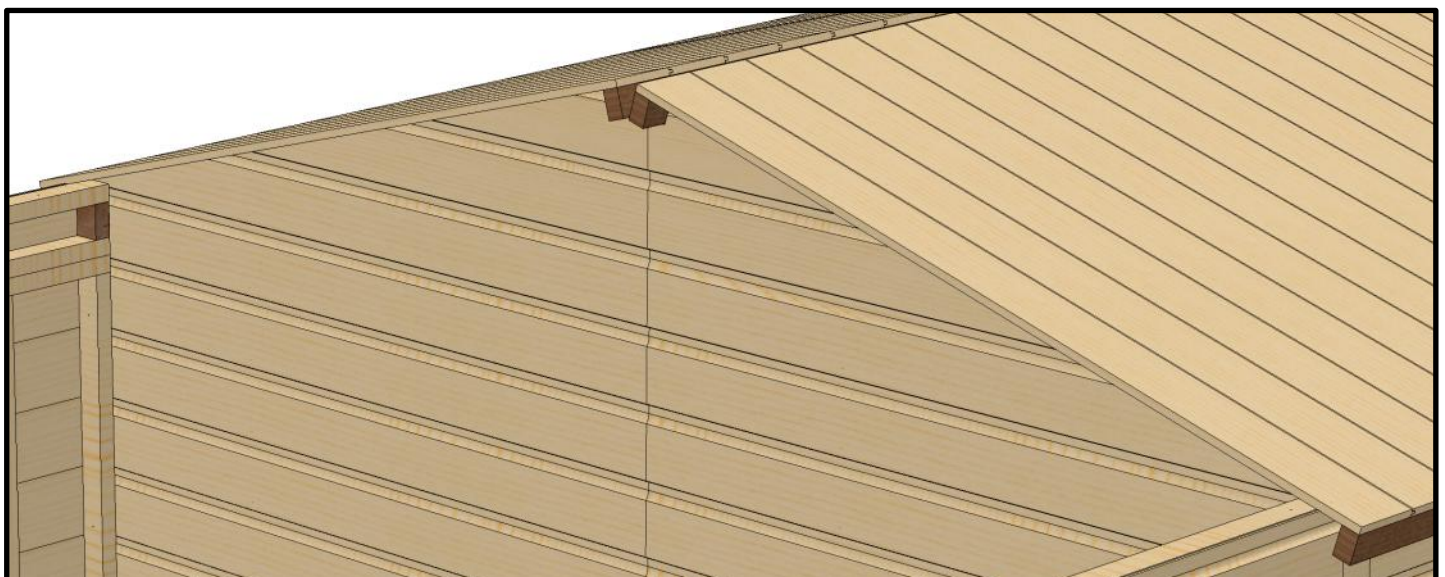


Attach the **AS027 Roof joiner** to the roof panels using 50mm screws. Remember to make 4mm pilot holes. Equally space the **AS027** so its overhanging 200mm from one side. You need to fix these on opposite ends of the roof sheet, one for the left slope and one for the right slope. Once you have attached this you can hook the roof onto the **ASA1028/29** Gable end and the **ASA1035** Truss. If panels start with a tongue or groove, they are not meant to interact with each other, roof panels simply butt up to each other.

NOTE: Please do not stand directly or put your whole body weight on the roof.



Your roof panels will overhang slightly into your shed extension, as seen below:



8x12 example

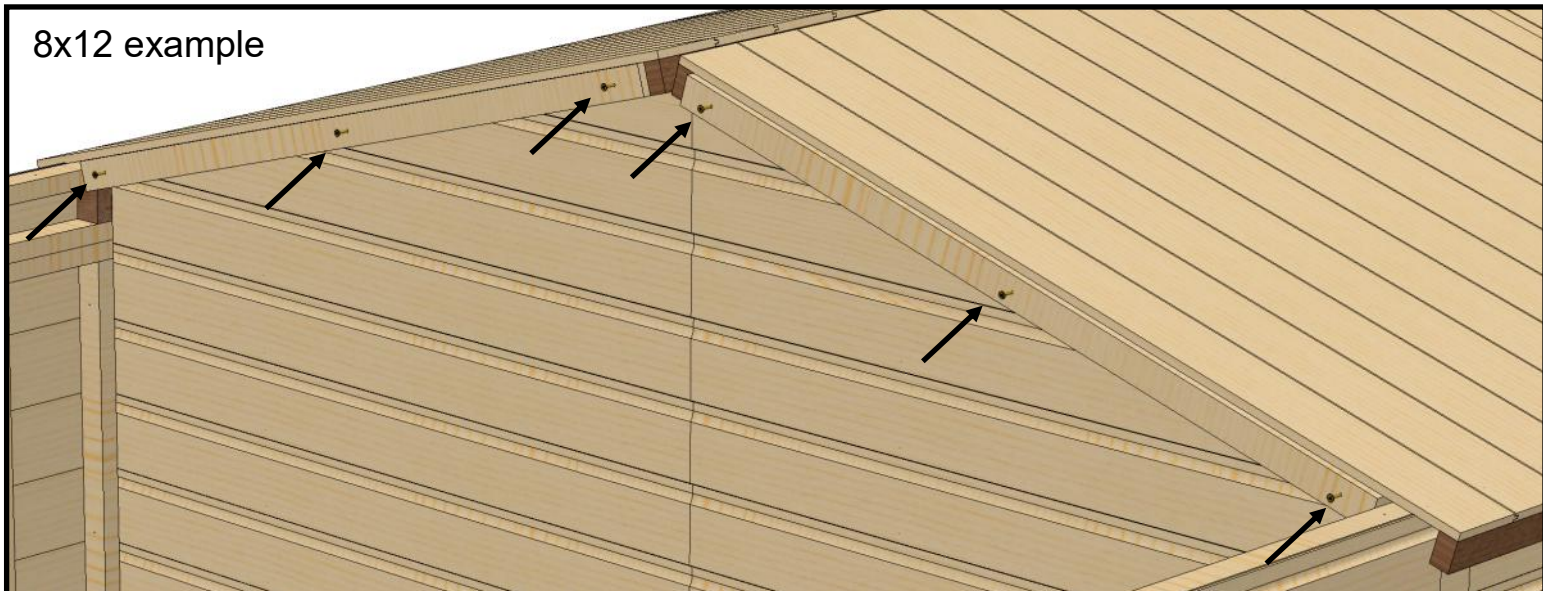
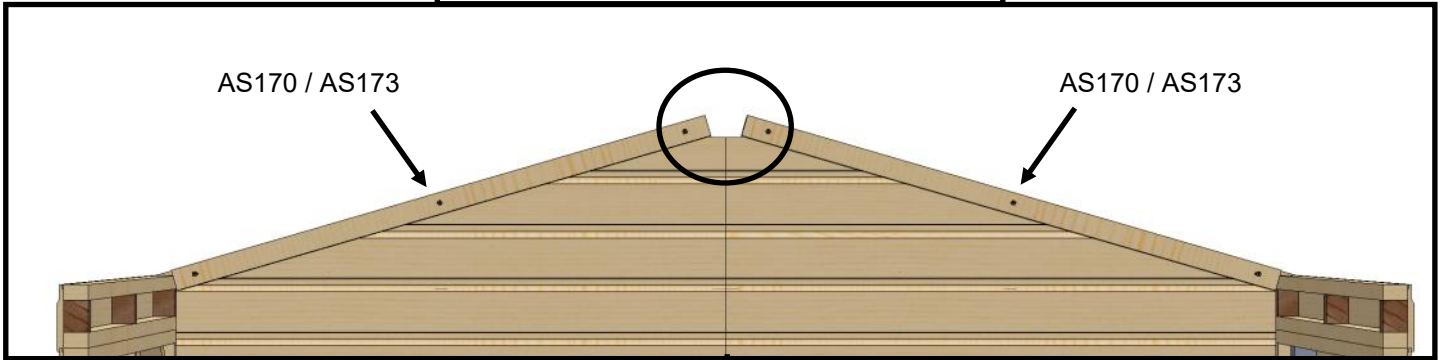
Roof Assembly

Before you begin to assemble the rest of the shed roof, you need to install the AS170 / AS173 Partition Roof Support Bars on the inside of the shed extension. Use **3 x 60mm screws for each bar**.

See below for where to position these.

AS170 = 8ft Wide
AS173 = 6ft Wide

INTERNAL VIEW:



No AS027 roof join is needed on the partition

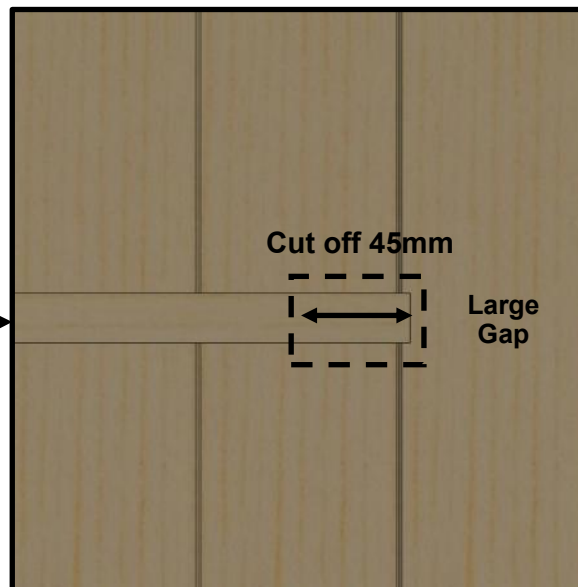
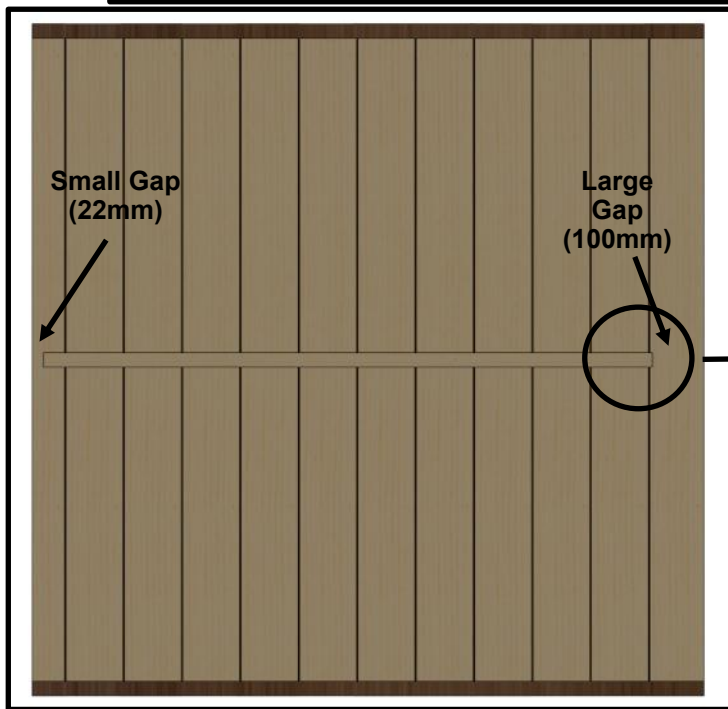
Roof Assembly

If yours is the 6ft wide model, no roof modifications are needed.

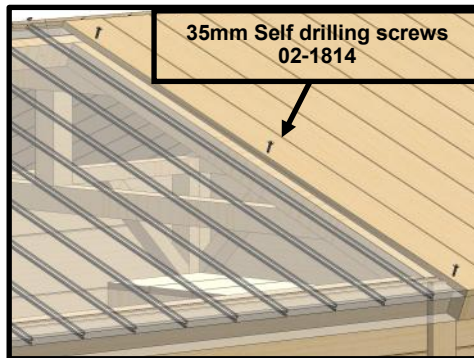
To fit the roof panel on over the shed extension, you will need to modify your end roof panel (only the one above the shed extension).

You will need to cut 45mm off the middle roof panel batten, at the wide gap end of the panel on side and remove the nail. See below

Before cutting with a hacksaw, ensure you are removing 45mm from the correct end. See how the gaps are different from the image below and take 45mm from the widest gap side.

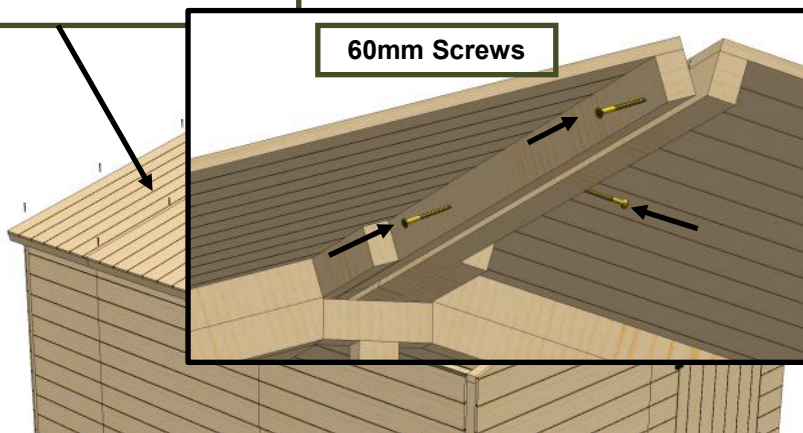


1. Screw on AS027 joining batons (50 mm screws and pilot drill) where panel joins on truss
2. Lift Panels onto roof
3. Even up overhand each end (44mm) and check its square.
4. Screw the joining baton to the other roof panel (50 mm screws and pilot drill)
5. Screw the ridge together using 60mm self drilling screws



35mm Self drilling screws
02-1814

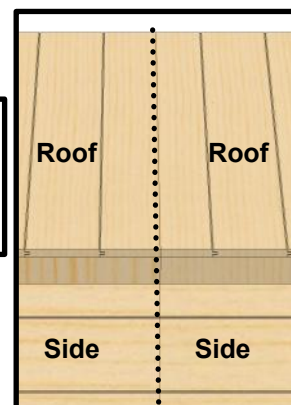
60mm Screws



8x10 example

Carefully line up where you screw into the roof. You want to make sure you screw into the frame of the **ASA1035 / 1010 Truss** and the frame of the **ASA1028/29 (8ft) and ASA1007 (6ft) Gable tops**. The screws should be within 22mm from the middle of the roof and 44mm from the end of the roof

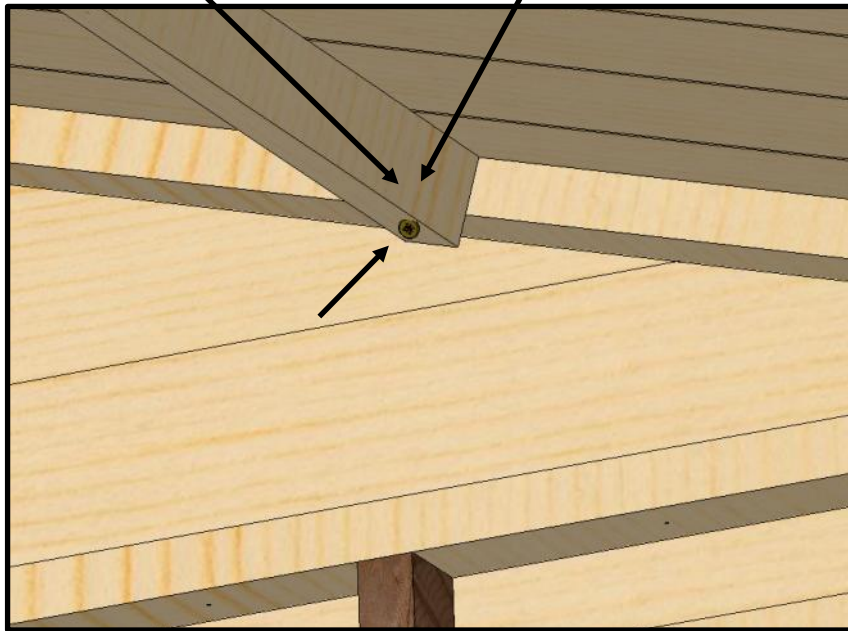
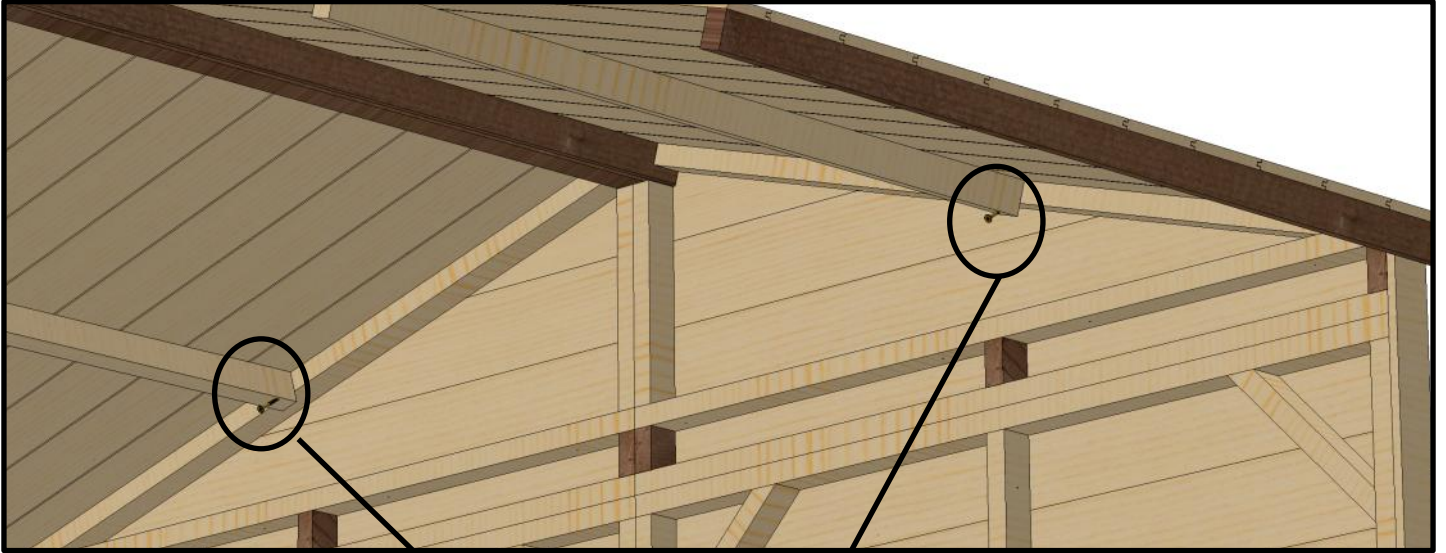
See the diagram to the right, this shows how the roof joint lines up with the side joint.



Roof Assembly

For the 8ft wide:


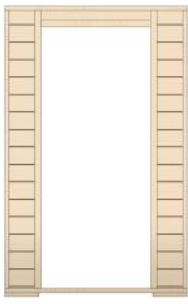
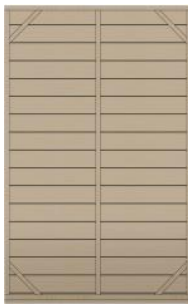

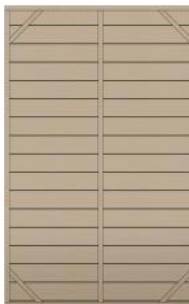

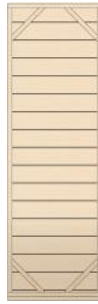

To secure the roof down, use 60mm screws and screw diagonally through the roof bars in the roof panels into the AS1029/29 Apex Panels. Do this on both sides of the roof in the shed extension




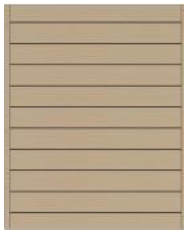
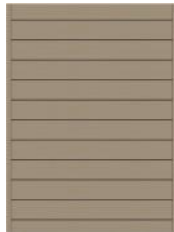










8x12 example

Standard Product Tables

6ft Wide Shed:




	ASA1004 2ft Panel 600x185 6	ASA1005 Sin- gle Door Panel 1200x1856	ASA1006 4ft Panel 1200x1856	ASA1008 Single Door 740x1751	AS1105 4ft Panel (NO LIP)	ASA1007 6ft Apex 355x1800	AS1106 2ft Panel (NO LIP)	ASA1103 4ft Spac- er Panel 1200x120
								
4ft Shed	1		2					4
6ft Shed	3	1	2	1	1	1	1	4
8ft Shed	1		4					6







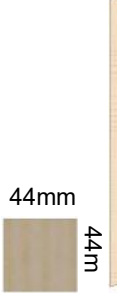

	ASA1104 2ft Spac- er Panel 600x120	ASA1001 4x6 Floor 1195x1790	ASA1024 6X2 Floor 600x1790	ASA1020 4ft Roof Infill 1025x1200	ASA1009 8x6 Roof Panel 1025x1300	ASA1016 6x2 Roof Panel 695x1025
						
4ft Shed	2	1	0	0	2	0
6ft Shed	4	1	1	2	0	2
8ft Shed	2	2	0	2	2	0





	AS072 Floor Extender 56x56 1790mm	AS173 Partition Roof Support 56x44 883mm	ASA1010 Truss 336x1800	AS306 Name Badge	AS302 Tee Hinges	AS303 Pad bolt	AS304 Turn Buttons
							
4ft Shed			0				
6ft Shed	1		1	1	3	1	2
8ft Shed		2	1				

Standard Product Tables

8ft Wide Shed:

	ASA1004 2ft Panel 600x185 6	ASA1005 Sin- gle Door Panel 1200x1856	ASA1006 4ft Panel 1200x1856	ASA1008 Single Door 740x1751	AS1105 4ft Panel (NO LIP)	ASA1029 8ft Apex Right 341x1200	ASA1028 8ft Apex Left 341x1200	ASA1103 4ft Spac- er Panel 1200x120
								
4ft Shed	0	1	3	1	2	1	1	6
6ft Shed	2		3					6
8ft Shed	0		5					8

	ASA1030 8x4 Roof 1300x1300	ASA1032 8x4 Infill 1200x1300	ASA1031 8x2 Roof 695x1300	ASA1023 4x4 Floor 1195x1195	ASA1026 4x2 Floor 600x1195	ASA103 5 Truss	AS039 Truss Bar (1173)	ASA1104 2ft Spac- er Panel 600x120
							 44mm 44m	
4ft Shed	2	0	0	2	0	0	0	0
6ft Shed	0	2	2	2	2	1	2	2
8ft Shed	2	2	0	4	0	1	2	0

	AS062 Floor Ex- tender 56x56 1195mm	AS170 Partition Roof Support 56x44 1160mm	AS306 Name Badge	AS302 Tee Hing- es	AS303 Pad bolt	AS304 Turn But- tons
						
4ft Shed	2	2	1	3	1	2
6ft Shed						
8ft Shed						

Please read:

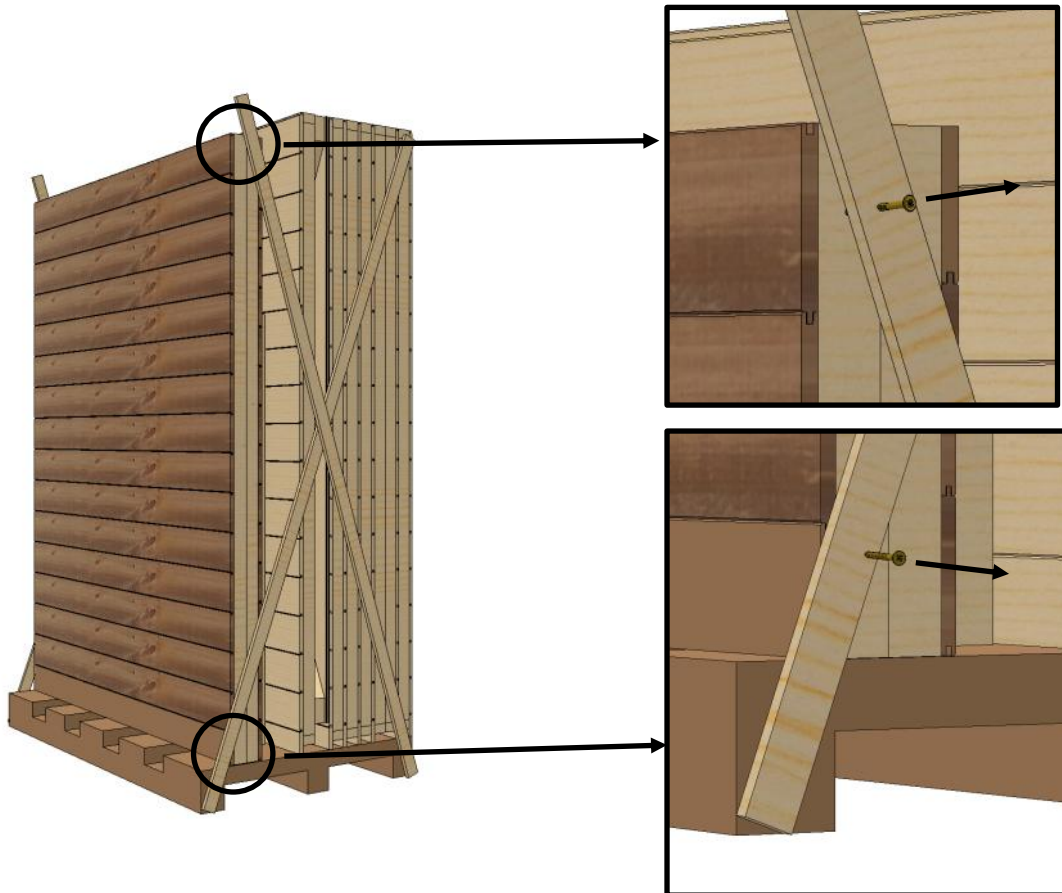
You can now go back to the main instructions of the summerhouse you have also received, there you can turn to the pages which relate to the installation of the felt, trims and fascia boards and carry on from there.

SHED EXT INS



Unpacking Pallet

The first thing you need to do is carefully unpack the pallet. Each panel is screwed to the diagonals at the top and bottom. Remove each panel, one at a time, by unscrewing the screws at the top and bottom. Take the panel off the pallet and place it somewhere safe.



SHEDFAST

www.greenhousepeople.co.uk

Call us on 01782 385400

The Greenhouse People Ltd, Unit 19 Blythe Park, Cresswell, Stoke-on-Trent, Staffordshire, ST11 9RD